

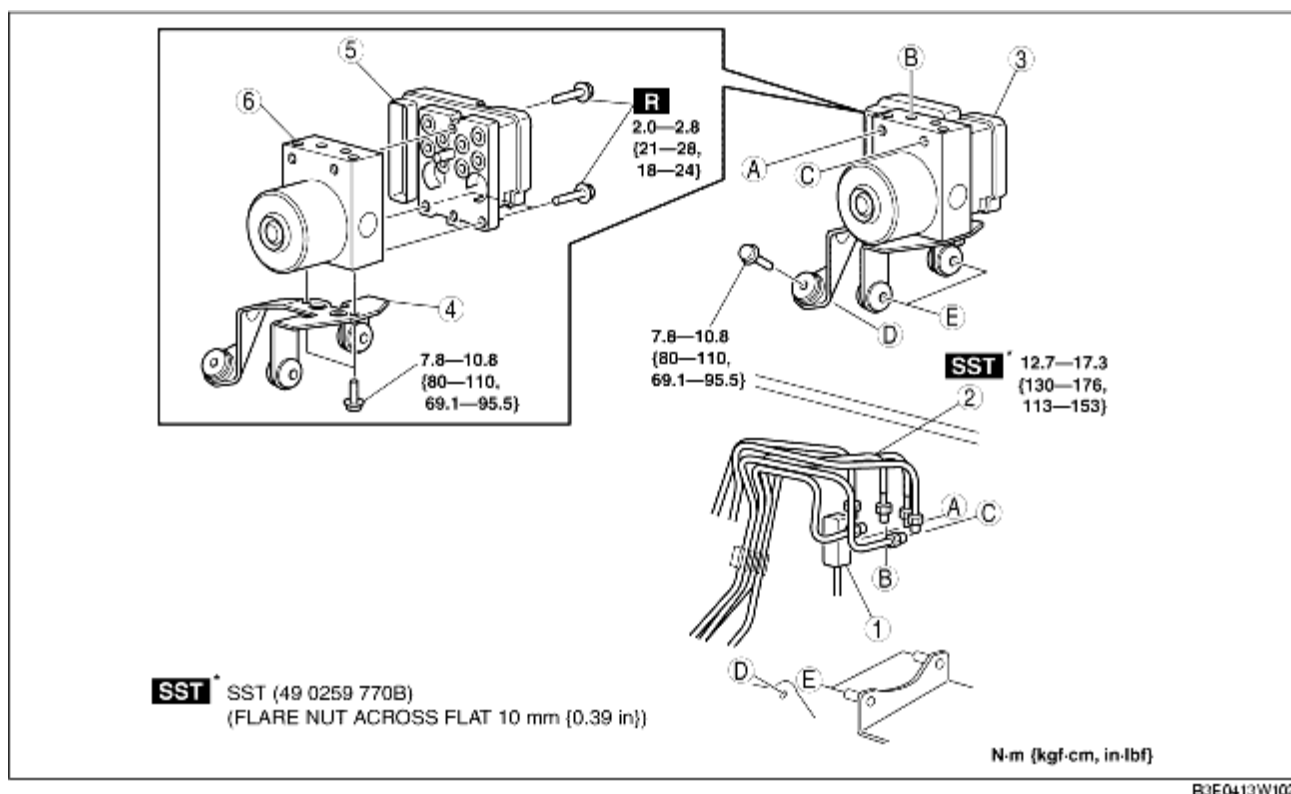
ABS HU/CM REMOVAL/INSTALLATION

B3E041343750W01

Caution

- Do not separate the ABS HU and ABS CM unless replacing them, otherwise the ABS HU/CM may not function properly. When replacing them with new ones, always perform procedures according to the instructions included with the new parts.
- The internal parts of the ABS HU/CM could be damaged if dropped. Be careful not to drop the ABS HU/CM. Replace the ABS HU/CM if it is subjected to an impact.

1. Remove the battery and battery tray. (See [BATTERY REMOVAL/INSTALLATION \[ZJ, Z6\]](#).) (See [BATTERY REMOVAL/INSTALLATION \[LF\]](#).)
2. For L.H.D., remove the reserve hose (MTX vehicles). (See [Reserve Hose Removal Note](#).) (See [Clutch Pipe and Clutch Reserve Hose Removal Note](#).) (See [Reserve Hose Installation Note](#).) (See [Clutch Pipe and Clutch Reserve Hose Installation Note](#).)
3. Remove in the order indicated in the table.
4. Install in the reverse order of removal.



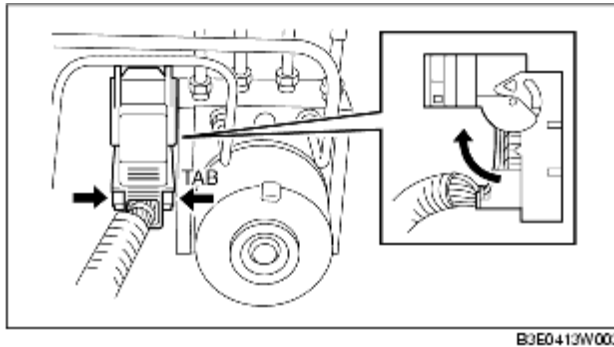
B3E0413W102

1	Connector (See Connector Removal Note .) (See Connector Installation Note .)
2	Brake pipe (See Brake Pipe Removal Note .)

	(See Brake Pipe Installation Note.)
3	ABS HU/CM component, bracket (See ABS HU/CM Component, Bracket Removal Note.)
4	Bracket
5	ABS CM
6	ABS HU

Connector Removal Note

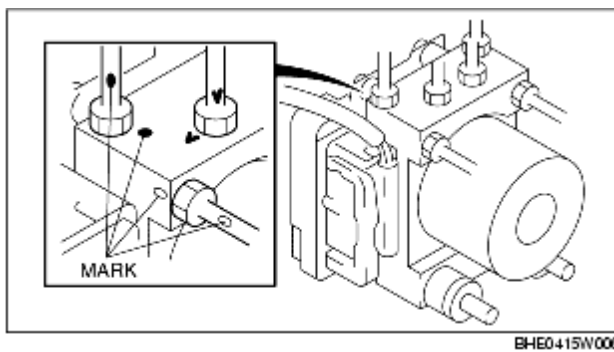
1. Pull the connector cover up in the direction of the arrow while pressing the tab of the connector cover.



2. Pull the connector toward the vehicle front and remove it.

Brake Pipe Removal Note

1. Place an alignment mark on the brake pipe and ABS HU/CM.



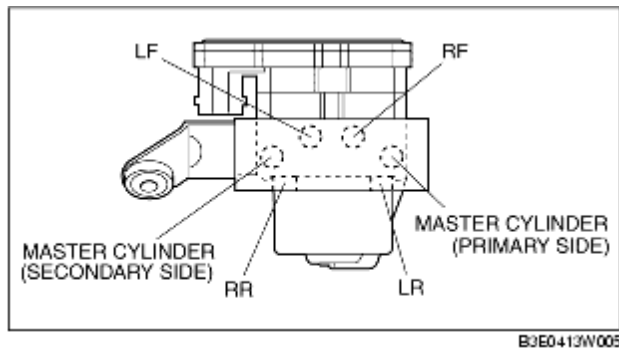
2. Apply protective tape to the connector to prevent brake fluid from entering.
3. Remove the brake pipe.

ABS HU/CM Component, Bracket Removal Note

1. As shown in the figure, move the bracket in the direction of the arrow and remove the ABS HU/CM component and bracket from the body.

Brake Pipe Installation Note

1. Align the marks made before removal and install the brake pipe to the ABS HU/CM referring to the figure.



Connector Installation Note

1. After connecting the connector, verify that the connector cover is completely pushed in.

